

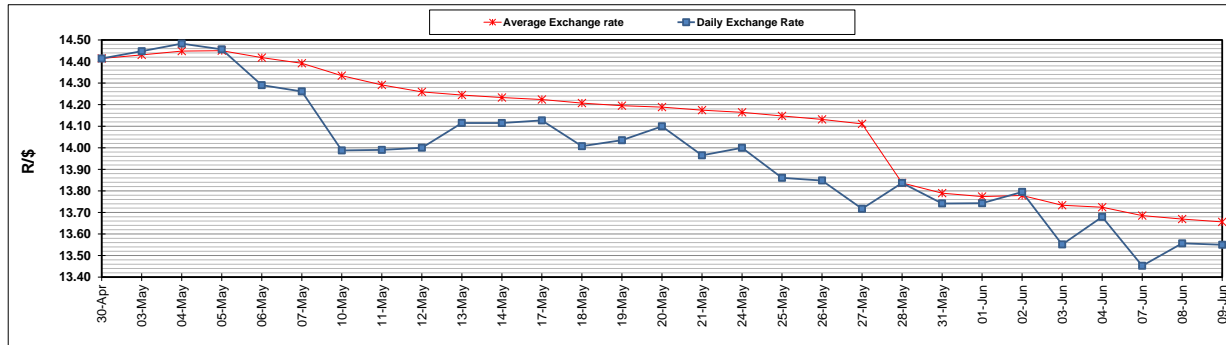
	PETROL 95 ULP	PETROL 93 ULP & LRP	DIESEL 0.05%	DIESEL 0.005%	ILL. PAR.
GAUTENG PUMP PRICE (SA c/l) AS FROM 02/06/2021	1,713.000	1,691.000	-	-	-
WHOLESALE PRICE (SA c/l) AS FROM 02/06/2021	-	-	1,466.620	1,471.020	877.488
SINGLE NATIONAL MAXIMUM RETAIL PRICE	-	-	-	-	1,102.000
BASIC FUEL PRICE - 09/06/2021 (SA c/l)	716.296	708.840	698.767	701.922	678.434
PRESS RELEASE CONTRIBUTION TO BFP 02/06/2021 - 09/06/2021 (SA c/l)	717.170	705.170	679.630	684.030	664.128
UNIT OVER/(UNDER) RECOVERY - 09/06/2021 (SA c/l)	0.874	(3.670)	(19.137)	(17.892)	(14.306)
AVERAGE BASIC FUEL PRICE 28/05/2021 - 09/06/2021	708.666	700.254	689.437	693.139	668.013
AVERAGE UNIT OVER/(UNDER) RECOVERY 28/05/2021 - 09/06/2021	11.837	8.249	(16.473)	(16.109)	(10.552)

ANALYSIS MOVEMENT OF AVERAGE OVER/(UNDER) RECOVERY

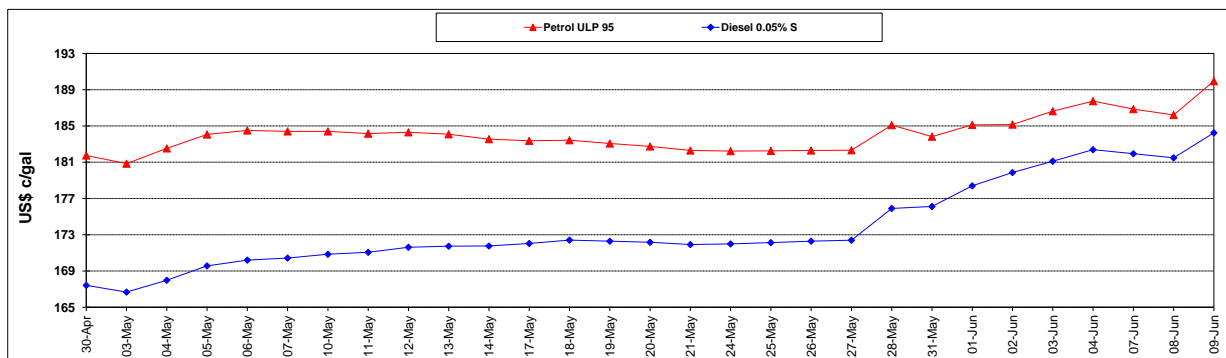
	PETROL 95	PETROL 93	DIESEL 0.05%	DIESEL 0.005%	ILL. PAR.
- MOVEMENT IN INTERNATIONAL PRODUCT PRICES	(11.764)	(15.072)	(39.435)	(39.193)	(32.799)
- MOVEMENT IN EXCHANGE RATE	23.601	23.321	22.961	23.084	22.247
AVERAGE UNIT OVER/(UNDER) RECOVERY 28/05/2021 - 09/06/2021	11.837	8.249	(16.473)	(16.109)	(10.552)

R/\$ EXCHANGE RATE - (R/\$13.5500- 09/06/2021)

EXCHANGE RATE USED IN BASIC FUEL PRICE



INTERNATIONAL PRODUCT PRICES OF BASKET USED IN BASIC FUEL PRICE



BASIC FUEL PRICE IN SA CENTS PER LITRE

